



**PROGRAMME MONITORING
& IMPLEMENTATION UNIT (PMIU)**

NEWSLETTER

FEBRUARY 2021

SCHOOL IMPROVEMENT FRAMEWORK

In February 2021, The School Education Department (SED) launched the School Improvement Framework (SIF) in Punjab as the new mechanism of school support and monitoring aimed at identifying and addressing school-specific needs at all level of the District Education Authority (DEA).

The SIF organizes monitoring indicators into four key domains of school performance. The indicators are indicative of elements that are necessary for a school's well-being, and track a wide spectrum of focus areas, ranging from student attendance, to blackboard visibility of students, to the presence of a school improvement plan.

FOUR DOMAINS OF SCHOOL PERFORMANCE UNDER SIF



SIF makes schools the unit of analysis as well as a site of action and reform, and identifies a baseline threshold for schools (and DEAs) to achieve to ensure the wellbeing of institutions, their teachers, and their students. The new regime was developed through an exhaustive consultative process led by the PMIU and PESP-II Technical Assistance.

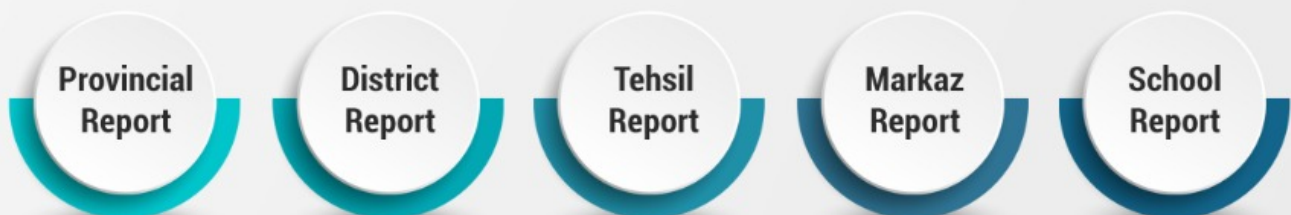


DFOS TRAININGS ON SIF

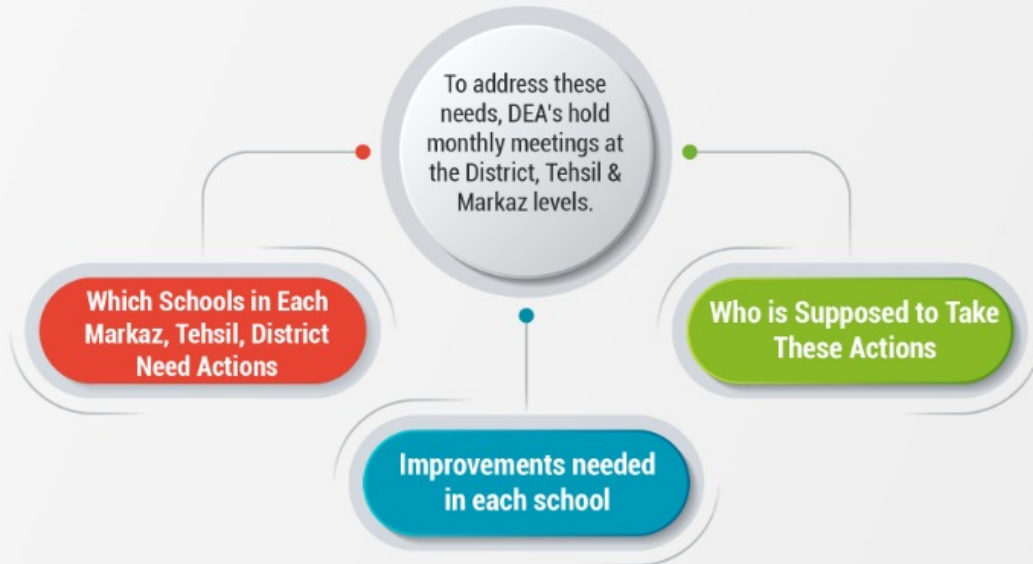
In November 2020, nine Divisional Field Officers (DFOs) were trained on the SIF and the implementation of field routines. These trainings were cascaded by PMIU DFOs in the field in December and January, to prepare DEAs for the official launch of the new regime.

SIF DASHBOARD

The PMIU, in collaboration with the PITB, has developed a dashboard to view and track performance against these indicators through carefully developed reports.



ACTION MANAGEMENT SYSTEM ON SIF DASHBOARD GENERATES REPORT ON



ANNUAL SCHOOL CENSUS 2021

Traditionally, PMIU conducts Annual School Census on October 31st every year. With focus on technological innovation, it was decided in 2018 to switch over from manual data collection to digitized data collection through the School Information System (SIS). SIS data is real time and is updated consistently through the web portal. However, to ensure that a complete picture of the sector is obtained at a given/cut-off date, Annual School Census activity using SIS was conducted simultaneously across the province, including all public Masjid Maktab, Primary, Elementary, Secondary and Higher Secondary schools.



B-Form Number of Students as the Unique Identifier to Increase Data Credibility

Latest Annual School:
Total Student Enrolment is **11,143,417**, out of which **91.3% (10,169,963)** students have already submitted their B-Form numbers

Along with B-Form requirement, numerous enhancements are done to the census in order to support and improve future financial schemes, inclusive education and policy making for improving of student outcomes

INNOVATIVE TEACHING SUPPORT PACKAGE (ITSP)

ITSP was rolled out across Punjab in December 2020 for teachers and AEOs to download and use this digital school-based CPD course, and instructions were issued for AEOs to conduct monthly Teacher Forum Meetings (TFMs) between the 10th and 15th of each month. Since the rollout, PMIU, QAED, DFOs and AEOs have been working hard to ensure that Teachers download the ITSP and begin to use it. It is expected that with the TFMs being conducted, the usage of ITSP will increase across the province and aid teacher's professional development. In order to understand the usage of the ITSP course/app and its uptake, the PESP TA team plans to conduct a rapid review to gauge the uptake and usage of the ITSP.

**120,000+ ITSP app
downloads by Feb
2020**

**Monthly Teacher
Forums being
conducted across
Punjab by AEOs to
teach the ITSP
course**

**AEOs refresher
trainings on ITSP
scheduled for April
2021**



LEARNING LOSS STUDY

The COVID-19 pandemic and subsequent schools closure led to inordinate disruption of education system across Pakistan. Therefore, the Punjab Examination Commission (PEC) conducted a study in six districts to understand the level of learning loss in Grade 5 students due to school closure. The study report has been published and disseminated at provincial and district level. Based on this study, a list of SLOs is prepared for teachers to focus on, so that learning losses can be reduced

