



**PROGRAMME MONITORING
& IMPLEMENTATION UNIT (PMIU)**

NEWSLETTER

**MARCH - MAY
2021**



Science, Technology, Engineering and Mathematics (STEM)

STEM is a curriculum based on the idea of educating students in four specific disciplines; **science, technology, engineering, and mathematics** – in an interdisciplinary and applied approach. **Under the STEM Learning Programme, the STEM Competition was held across Punjab to promote hands-on learning.**

Given the rise in COVID cases reported across the country, the entire Competition was held online, with the final round sessions livestreamed on PMIU's Facebook page to provide access to other government schools.

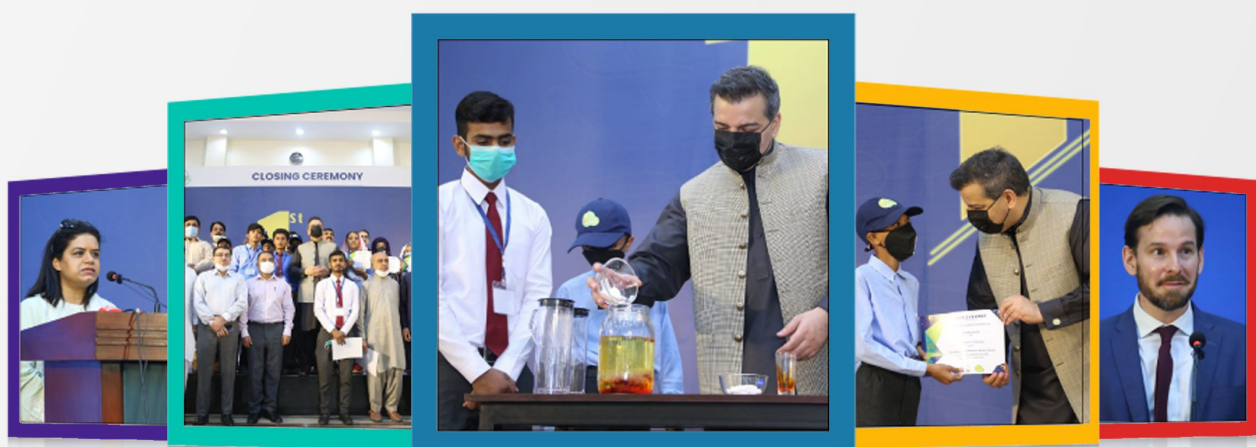
36 districts
and 20,000
video entries

33 Online
Sessions

1700+
Unique
Logins

More than
3800
teachers
involved

Closing ceremony for the **STEM Competition** was held on the **17th June, 2021** at the Aiwan-i-Quaid-i-Azam, Lahore. Representatives from FCDO joined the event, while the Minister School Education was the Chief Guest. The Minister participated in STEM based activities with the students, and also distributed prizes to the winners of the Provincial Round of the Competition.



ANNUAL SCHOOL CENSUS

PMIU-PESRP conducts Annual School Census (ASC) on October 31st every year through School Information System (SIS), an online system available to all public schools in Punjab. This serves as the main activity for the collection of data regarding teachers, staff, students, and facilities of public schools. This data is used for planning and decision making in the School Education Department e.g., provision of non-salary budget (NSB), provision of stipends to girl students, Annual Development Plan (ADP) Schemes (reconstruction of dangerous buildings, provision of buildings, missing facilities, additional classrooms and toilets, science and IT laboratories, development of playgrounds, etc.).

Here are few key statistics of Annual School Census 2020-21:



ENROLLMENT

11.14 million

BOYS

5,638,776

51%

GIRLS

5,502,747

49%



SCHOOLS

48,238

BOYS

22,731

47%

GIRLS

25,507

53%



TEACHERS

366,671

MALE

163,216

45%

FEMALE

203,455

55%



DRINKING WATER

99.8%



TOILETS

99.8%



ELECTRICITY

99.3%



BOUNDARY WALL

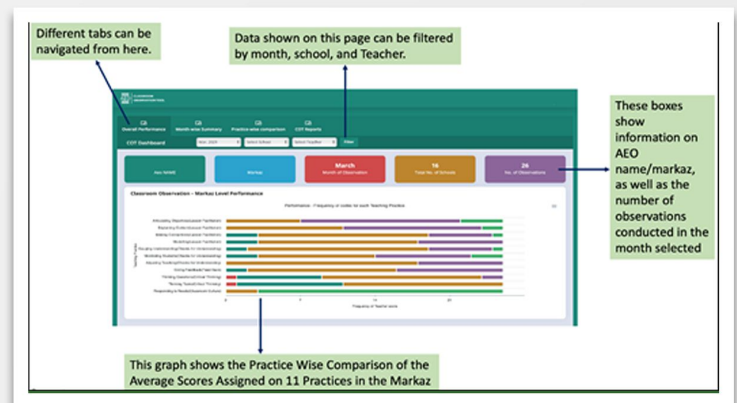
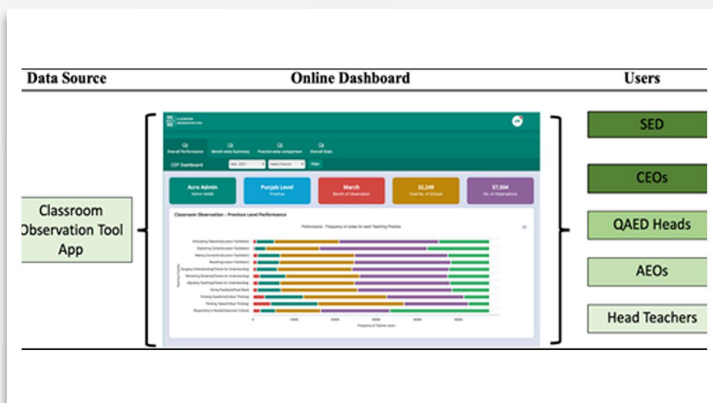
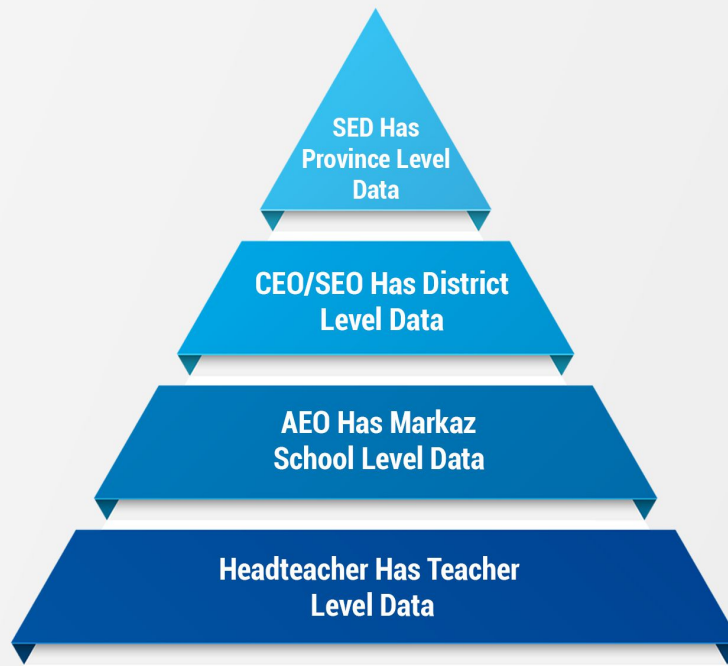
98.2%



COT DASHBOARD

The COT Dashboard, launched alongside the new COT tool and App, collects and consolidates high-quality data entered in the COT app. It provides information on observations conducted, monthly observation targets, average scores assigned on COT practices, as well as the ability to make month wise comparisons of COT practice scores. Additionally, downloadable COT reports are also available on COT dashboard, which are designed to utilize the rich data being collected from the COT app and helps the relevant stakeholder make data-driven decisions.

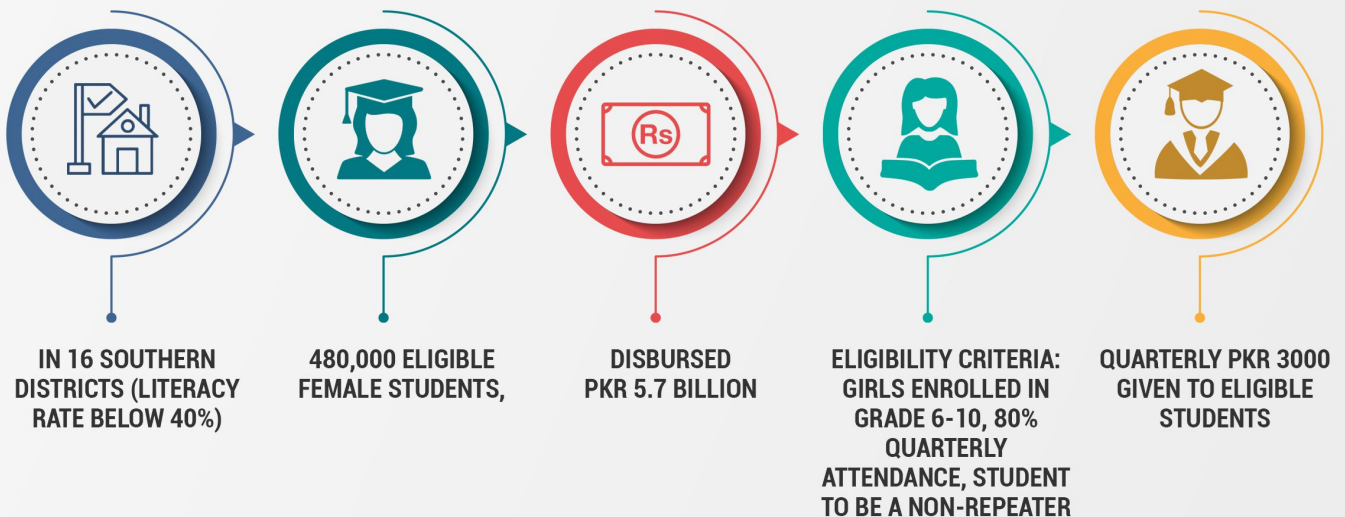
Level of Access on COT Dashboard



PUNJAB SECONDARY SCHOOL STIPEND PROGRAMME (PSSSP)

The Programme Monitoring and Implementation Unit (PMIU) has been operating the Punjab Secondary School Stipend Programme (PSSSP) since 2004. The PSSSP, also known as **Zewar-e-Taleem Programme (ZTP)**, operates in the Recently, an in-depth mapping and analysis of all ZTP processes has been conducted for each stage of the programme. To overcome the drawbacks identified at each stage, a redesigned process has been approved, and now it is being implemented to improve the overall process.

which are enlisted below:



Additionally, Integrated Data System is being developed, which will be the overarching system that integrates various linked processes and connects all the stakeholders. It will provide tailored access to all stakeholders: schools, district offices, PMIU, PSPA, Bank of Punjab and other partners.

ENROLLMENT DRIVE

Enrolment Drive was launched with a particular focus on students who dropped out during the prolonged closures of schools twice in the wake of the COVID-19 pandemic. Instead of engaging school teachers in the enrolment drive, school councils are being involved to engage with the local community to send their children to schools who either dropped out from the schools during the recent closures or the already out-of-school children (OOSC) across the province. Since February, 707 thousand plus children have been enrolled:

Girls:
374 thousand

Boys:
333 thousand

A total of 127
thousand school
council meetings
across Punjab

Engaging SC
members to
reach out to
community

A total of
145 thousand
community
meetings across
Punjab

